

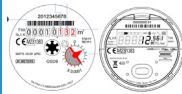
SUB-WATER METERING OVERVIEW

Waterware's Water Meter Solution effectively measures water consumption offering flexibility in method, cost and environmental compliance.

The system enables the collection and transmission of data recorded by the meter via a manual, local or wireless network. The solution provides for a range of transmitting and receiving hardware options from simple 'walk by' to fully automated remote transmission solutions.

READ FUNCTIONS

MANUAL READ



Physically reads the water consumption that passes through the meter, off the mechanical dial or digital display.

WIRELESS WALK-BY (SHORT RANGE)



Wireless onsite WALK-BY data reading collection that requires a physical device (laptop/tablet) connected to the Wireless M-BUS transceiver. Collects and sends the data pack to the BMeters software for reporting, with alarm functionality

The M-Bus Wireless WALK-BY system enables faster and more convenient data collection. This is a common method adopted by meter reading, body corps and facility management companies as an economical solution.

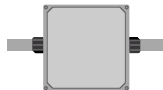
WIRELESS REMOTE (LONG RANGE)



Water system, monitoring and managing your water consumption has never been easier. This innovative solution utilises wireless technology to remotely collect data from your water meter without the need for physical access, with alarm functionality.

Connectivity requires local gateway to connect to the internet that send the data through to an application server to present the reading to analysing or billing.

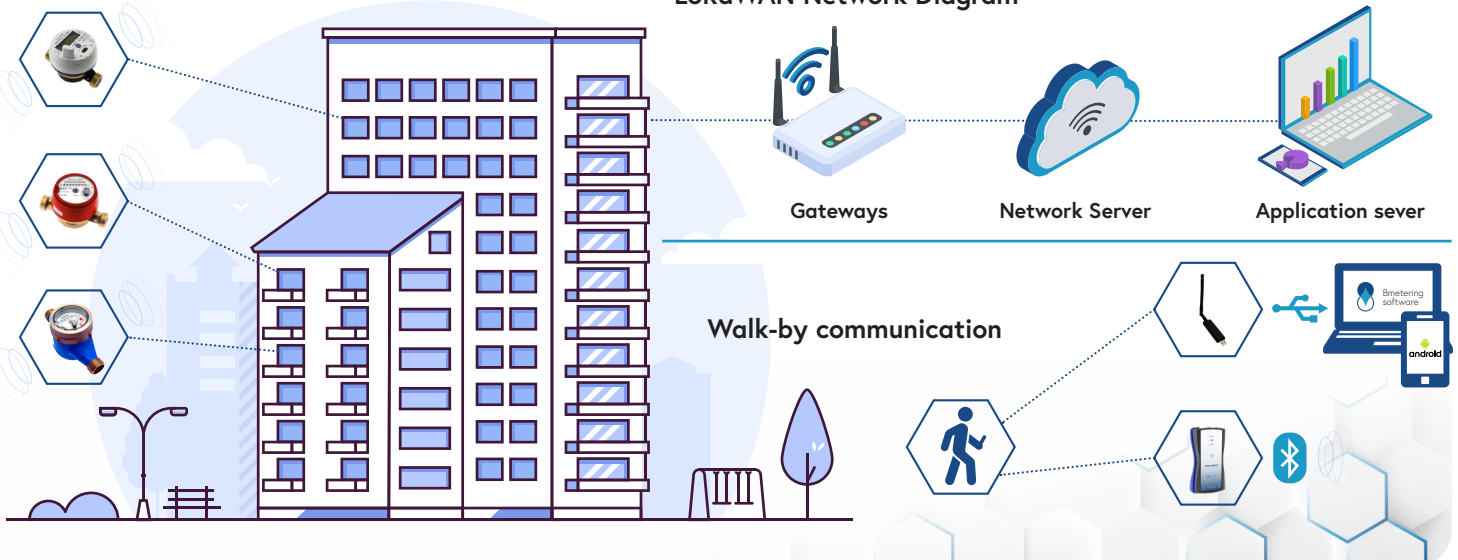
WIRED TRANSMISSION



Physically reads the water consumption that passes through the meter, off the mechanical dial or digital display.

READ SOLUTIONS

LoRaWAN Network Diagram



SUB-WATER METER PRINCIPAL DESIGN

01

Counter – Water Meter

An accurate counting device that measures the volume of water passing a single point over a specific period and stores the data for communication.



02

Data Transmitter – Display and/or Module

Sends and communicates the counted water consumption data to the acquisition point.



03

Data Acquisition – Signal Repeater, GPRS Concentrator

Collects data transmitted on-site and forwards it to the Data Collection stage.



Allows the setup of real-time alarm notifications to stay informed about the meter's status and, for example, be alerted in case of water leaks

04

Data Collection – Network or billing Software platform

A software platform that collects, formats, and presents the reading values (data) in a generic format, such as CSV or XML, for further processing.

This point is crucial for monitoring water consumption, billing, and managing water distribution efficiently.



SOLUTION ASSOCIATED PARTIES

Product	Meter Installation	Data Acquisition	Data Collection
Distributor/Supplier of compliant metering device to standard and codes.	Installer / Plumber of hardware to environment and point of measurement.	Commissioning technical configuring the system to recording, and consumption data locally or remote.	Complete solution terminated to collection software platform – monitoring/billing software or IoT platform.

YOU CAN'T MANAGE WHAT YOU DON'T MEASURE